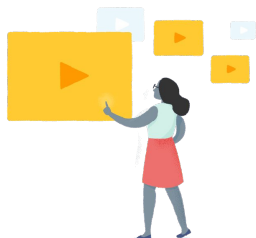


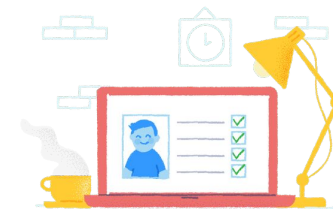


LPPS

Did you know that **Edpuzzle** and **Google Classroom** are a perfect match?



Sync **Google Classroom** with Edpuzzle to **create student accounts**
Post video-lessons from Edpuzzle straight to Google Classroom
Students just click an Edpuzzle assignment and “**Sign in with Google**”
Scores **automatically sync** with your Google Classroom gradebook!



To get started you'll need to **connect your Google account** with your @lpsb.org email.

Troubleshooting: Are you receiving the message below when trying to Connect your Google Account?

 Another user is connected with this Google account

That means you already signed up with your @livingstonschools.net Google account, and you'll need to **delete it** in order to connect...

Step 1: Log out of the account you are signed into currently (click the icon in the top-right corner and choose **Log out**)

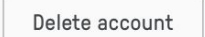
Step 2: On edpuzzle.com click  and **I'm a teacher** then click  and choose [@livingstonschools.net](https://livingstonschools.net)

*There should be a message reminding you to **Verify your account** at the top of your screen.*

*If there is no verification reminder, please do **not** proceed to Step 3 unless you have no Classes or Content saved on this Edpuzzle account!*

For further guidance, contact support@edpuzzle.com and let them know the @lpsb.org and @livingstonschools.net accounts you are trying to connect.

Step 3: Visit your Edpuzzle Profile (click the icon in the top right corner and select your name)

Step 4: Scroll to the bottom of the page until you see  – Carefully read the message, and confirm your choice.

Now you can use your email and password to sign back into Edpuzzle, and **Connect your @livingstonschools.net Google account!**

When in doubt, reach out!

• support@edpuzzle.com